

COMPANY BROCHURE

**MINKKE
ARCHITECTS™**

bringing dreams to life

CONTENTS

- I. INTRODUCTION
- II. VISION
- III. CLIENTS & AWARDS
- IV. OUR SERVICES
- V. THE TEAM





I
INTRODUCTIONS

"...Bringing Dreams to Life..."

INTRO

MINKKE ARCHITECTS Private Limited is an Award-Winning Architectural + Interior Design practice primed with producing quality design with user fit and individuality. We have served many reputable public-listed + international developers and hoteliers, in addition to the various government agencies.

A long-standing interest in hotels + resorts and high-end residential development has led our firm to focus on this particular specialty, resulting in many of such projects in Singapore, Indonesia, Malaysia, Cambodia, and China. We treat each project as a unique challenge from our clients, creating fresh, new architecture or interiors that are both **urbane** yet **natural**, **progressive** yet **historical**, and **cultural** yet **universal**. This is supported by the latest technologies available, enabling us to integrate innovative and technically sound designs with efficient project management.

We are staffed with a group of talented professionals who possess a wide range of expertise and passion for creating architecture + designs that enrich the human spirit. Our services are always client-centric, where we seek to understand their underlying concerns + intentions before we embark on our Creation Journey. This explains the width and breadth of our clientele base, running the gamut from public to private enterprises, international to local hoteliers, and local to the institutional.



1 DIVERSIFIED TEAM
20+ YEARS OF EXPERIENCE
100+ PROJECTS DESIGNED

Project: VOZA Façade Link, Surabaya

"...Bringing Dreams to Life..."



Photo: Mr. Minkqee Tan

ABOUT US

MINKKE Architects started in 1999 and recently incorporated in 2016 in Singapore. To date, it has accumulated **more than 20 years** of professional & industry experiences.

The founder - **Minkqee Tan** - was originally born in Penang but migrated to Sydney Australia where he spent his teens and university days before heading back to Asia upon completing his architectural studies. Given a choice between Malaysia, Hong Kong, or Singapore, he picked Singapore for its promise to be the capital of New Asia, where business and later society will thrive to create a unique Asian Metropolis unlike anything else then or even now.

Believing in consolidating the home ground first before venturing outside, MINKKE focused initially on projects in Singapore. Finally, it was not long before MINKKE was noticed by overseas developers and hoteliers, which led to many projects in Indonesia, China, Malaysia, India, and Brunei.

Even then, MINKKE refrained from setting up branches outside of Singapore until recently, when he started to form a vision of a regional and eventually international firm that will be a sustainable and thriving business to showcase to the world outside what an architectural and design firm from Singapore is capable of.

To be an international firm has always been a dream for us and now with an emboldened vision...it has indeed become a reality!

COMPANY PHILOSOPHY

Our design vision is to continually benchmark the beautiful natural styles by acquiring inspirations from Asia's most sought-after landscapes to fuse together with modern contemporary to form true works of art.

Minkqee Tan's profound sense of *Asian Diaspora* drives the firm's search for the spirit of New Asia by synthesizing the various fragments from the vastly differing Asia's social and historical landscape.

Together with a team of committed, talented, and diverse design staff, Mr. Tan and his team are constantly on the lookout for new possibilities that can push forward his notion of Super Asia - a **fusion of old and new** Asia merged with influences from East and West.

"...Bringing Dreams to Life..."

S . P . A . C . E

These Values will be embedded in the way we do things
at **MINKKE** Architects.

Service

To serve our clients and the society at large, by bringing rewards and adding value to them.

Passion

To do things from our heart, unselfishly and with the goal of adding value to the world.

Accountability

To be accounted by delivering on - and wherever possible, *beyond* - what we promise to
our clients, colleagues, companies, and society.

Creativity

To leverage on our trained ability to think out of the box in order to solve all problems - be it design or
business ones - and, in the process, creating values for all stakeholders.

Excellence

To uphold a culture of excellence, where we do things to the best of our ability
and to constantly improve on our past performance.





II

VISION

"...Bringing Dreams to Life..."


VISION

To turn *Dreams to Life* by creating residences and hotels in the role of either an Architect, Interior Designer, or as a Developer.

MISSION

- 1** To create better world by turning Dreams to Life with amazing spaces and innovative designs for work, live, and play.
- 2** To create platform that will enable MINKKE to give back to society. At the same time, providing an exemplary model of a corporate citizen to the world.





We create one consistent logo to symbolize our *One Voice*
...of bringing dreams to life, in everything we do.

— MINKKE BRAND IDENTITY

MINKKE BRAND IDENTITY

We employ our brand & logo on everything we have, from our letterheads, our deliverables, name cards, to our tote-bags & our signage, construction billboards, and corporate gifts.

We create one consistent logo to symbolize our *One Voice* ...of bringing dreams to life, in everything we do. And in the process, send a strong and simple message to the world, that we are here to bridge the - at times seems irreconcilable - gap between our collective dreams and the real world.

**MINKKE
ARCHITECTS™**
bringing dreams to life

Upper case lettering fonts in bold symbolizes simplicity and boldness in our vision.

Tagline in lower case, to send a message to the world of what our vision is in an uncomplicated & easily understood way that even a simple man on the street can comprehend.

Our logo of "MINKKE Architects" is simple & understated, yet elegant.

It symbolizes the fact that design should be understood by the normal man, and not just the educated and well-informed elites of the society.

It aims to popularize, democratize, and demystify the concept of "design", to show that design does indeed benefit the world at large, and not just the exclusive 1% of the population.

And it is not design for the sake of design, but a tool to bring about a better world by turning everyday DREAMS to LIFE for everyone.












III
CLIENTS & AWARDS

CLIENTELE

MINKKE has an accomplished diverse portfolio of projects that range across 5-stars hotels, luxury residences, resorts, and F&B outlets for clients including the Fullerton Hotel Group, Fraser Hospitality, Far East Organization.

And projects such as the Kempinski, JW Marriott, Crowne Plaza Hotel, YTL, and Silvan Imberg. As well as various show-flats for Far East Organization.

DEVELOPERS

| | | |
|---------------------------------------------------------------------------------------------------------------------------------------------------------------------------------------------------------------------------------------------------------------------------|---------------------------------------------------------------------------------------------------------------------------------------------------------------------------------------------------------------------------------------------|-------------------------------------------------------------------------------------------------------------------------------------------------------------------------------------------------------------------------------------------|
|  <p>Far East Organization INSPIRING BETTER LIVES</p> <p>FAR EAST ORGANIZATION One of Asia's largest estate group & Singapore's largest private developer.</p> |  <p>UOL Group Limited 华业集团有限公司</p> <p>UOL GROUP LIMITED One of Singapore's leading property companies with \$20 billion assets.</p> |  <p>LEE KIM TAH GROUP</p> <p>LEE KIM TAH GROUP Pioneer of Singapore's world-renowned public industry.</p> |
|  <p>GOODLAND GROUP LTD Singapore-based premier lifestyle property developer.</p> |  <p>SINO LAND 信和置業</p> <p>SINO LAND One of the leading property & real estate developers from Hong Kong.</p> |  <p>YTL Corporation Berhad SINCE 1955</p> <p>YTL CORPORATION BERHAD Malaysian infrastructure conglomerate founded in 1955.</p> |
|  <p>GOLDEN FLOWER</p> <p>GOLDEN FLOWER Leading garment manufacturer from Indonesia.</p> |  <p>GRAND INDONESIA</p> <p>GRAND INDONESIA Privately owned company managing Grand Indonesia Shopping Town.</p> |  <p>HAWARE PROPERTIES</p> <p>HAWARE PROPERTIES One of the largest developers in India with high quality timely construction.</p> |



LIPPO GROUP
Asia's largest and most diversified conglomerates based in Indonesia.



POLLUX PROPERTIES
Award-winning property developer & management group from Indonesia.



TANRISE PROPERTY
Founded in 2003, one of Indonesia's trusted and creative developer.



HEADWAY REAL ESTATE
Hangzhou's award-winning real estate company with 28 years of expertise.



WISMA NUSANTARA
A member of an elite group of institutions & companies in Jakarta.



CHINA FORTUNE LAND DEV.
World's leading end-to-end master planner of New Industry Cities.



NUSMETRO
An established property developer for luxurious & innovative design.



NOBLE HOUSE
Grade A Office Tower in Jakarta with high investment value.



KEPPEL LAND
Singapore's largest group for property, infrastructure, marine, and offshore.

GOVERNMENT



JTC CORPORATION
Singapore's lead agency developing dynamic industrial landscape.



SINGAPORE TOURISM BOARD
Champions Singapore's tourism sector under Minister of Trade & Industry.



SINGAPORE BCA
Champions Singapore's development of the built environment sector.

HOTELIERS



INTERCONTINENTAL HOTELS
World's leading hospitality company headquartered in England.



JW MARRIOTT
Luxury hotel brand with award-winning service & extraordinary experiences.



PULLMAN
An upscale international hotel brand owned by Accor Hotels.



KEMPINSKI
Europe's oldest luxury hotel group, specializes in touch of European flair.



OAKWOOD
Award-winning serviced apartment group with over 50 years of expertise.



FRASERS HOSPITALITY
A global hospitality operator with Gold Standard properties.



THE FULLERTON HOTEL
SINGAPORE

THE FULLERTON HOTEL
Singapore's five-star luxury heritage hotel.



FURAMA INTERNATIONAL
Singapore-based hotel management company with award-winning hotels.



HOTEL PROPERTIES LIMITED
Singapore-based hotelier and investment holding company.



RESORTS WORLD SENTOSA
Asia's premium lifestyle destination resort. Home to world-class luxury.



LOUIS KIENNE HOTELS
A contemporary brand for cosmopolitan travelers and city folks.



VASA HOTEL
A 5-star hotel brand with modern-day luxury design.

RETAIL



TOTO
World leading brand of sanitary, fitting, and kitchen products.



SILVIAN IMBERG
World renowned luxury designer swimwear and resort wear.



ASIAN PALETTE
Stands out with its wide selection of arts by the top artists of SE Asia.

FNB



TUNG LOK GROUP



HARRY'S INTERNATIONAL



MADAM WONG GROUP



ST JAMES POWER STATION



KINARA RESTO. GROUP



CHINESE SWIMMING CLUB

To create better world by turning
Dreams to Life with amazing
spaces and innovative designs.

— MINKKE





"...Bringing Dreams to Life..."

Project: Chamas Churrascaria, Surabaya

AWARDS



2000-2005

- Gold Award for IndoChine SIA (Colour) 2000
- Gold Award for Newsroom Bar SIA (Colour) 2001
- Silver Award for Shanghai Sally Club SIA (Colour) 2002
- Merit Award for The 'Esplanade Office' SIA (Colour) 2003
- Heritage Award 2005 for The Fullerton Waterboat House URA 2005

2010-2012

- Silver Award for Toto Sales Gallery IIDA 2011
- Merit Award for Silvian Imberg IIDA 2011
- Merit Award for Mei Lin Townhouse No. 3 IIDA 2011
- Silver Award for Crowne Plaza (Interior Design) IIDA 2012
- Silver Award for Lin An Hangzhou (Architecture) IDA 2012

2013-2020

- Silver Award for Lin An Hangzhou (Interior Design) IDA 2012
- Silver Award for Banyan Residence IDA 2012
- Honourable Mention for Armani Villas IDA 2012
- Honourable Mention for Silvian Imberg IDA 2012
- Honourable Mention for Xi xi Clubhouse IDA 2012
- Honourable Mention for Miro Condominium (Interior) IDA 2013
- Gold Award for Miro Condominium MIPIM Asia Awards 2013
- Silver Award for Chamas Restaurant Best F&B Design, IDCS 2019 Interior Design Confederates Singapore.

"...Bringing Dreams to Life..."

MEDIA COVERAGE



PRESTIGE[®] MAGAZIN

d-associates

iD INDONESIA
DESIGN



mediacorp

THE WALL STREET JOURNAL.

ASIA

PRINT & ONLINE

Global Business News for Asia



mediacorp

Tatler
SINGAPORE

INDONESIA
TATLER





IV

OUR SERVICES

CAPABILITY STATEMENT

MINKKE is an integrated architectural + interior design consultancy practice that conceptualizes, design, develop, document, & administers building projects around the Region for the Corporate Clients - like Property Developers, Hoteliers, F&B Operators - as well as Individual Private Clients.

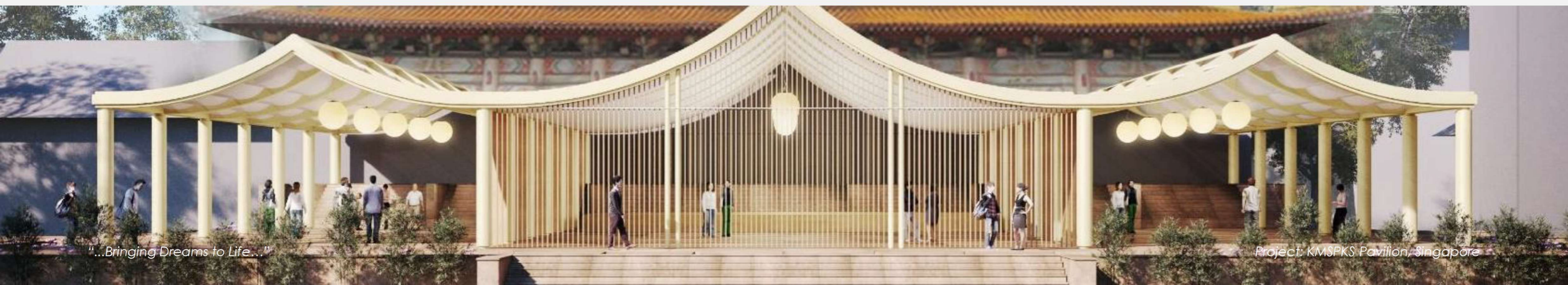
With offices in Singapore, Jakarta, & Kuala Lumpur, MINKKE delivers projects across different countries spanning from China, India, Indonesia, Laos, Brunei, Malaysia, & Singapore.

Project Types that MINKKE has typically undertaken in the past & also currently present include as follow :

- Hotels
- Corporate Offices
- Condominiums & Apartments
- Restaurants & Bars
- Retail Malls & Outlets
- Sales Galleries & Showrooms
- Private Homes

Technically, MINKKE capabilities can embrace any or all the following; to be customized around the user requirements:

- Architectural Design Consultancy.
- Interior Design Consultancy.
- Project Feasibility Studies.
- Project Programming.
- Project Conceptualization; leading to Concept Design.
- Schematic Design.
- Design Development.
- Detailed Design.
- Documentation-Tender & Contract.
- Tender Process.
- Construction Drawings.
- Construction Administration.
- Authorities Compliances & Submission Services (Architect of Record).

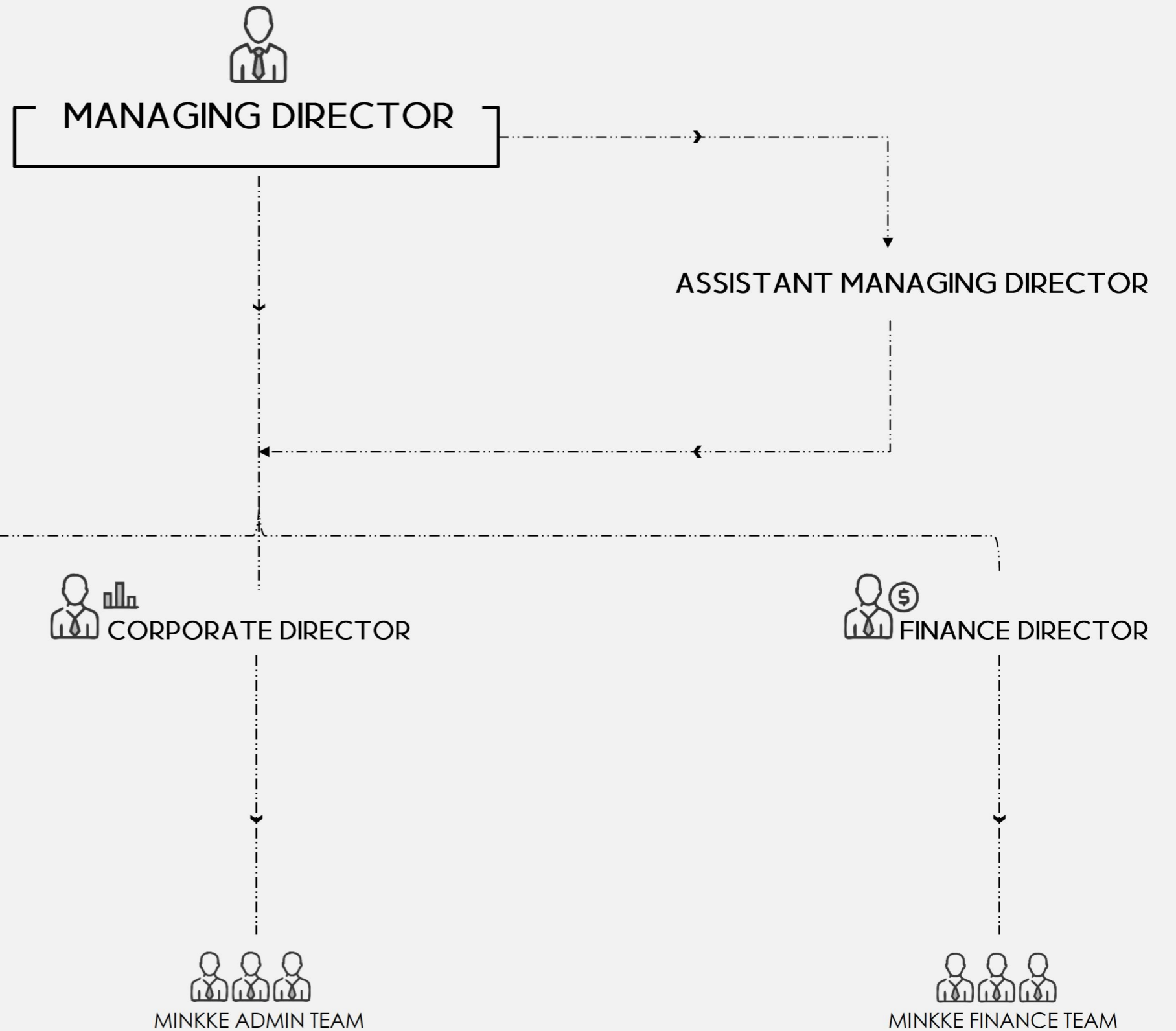




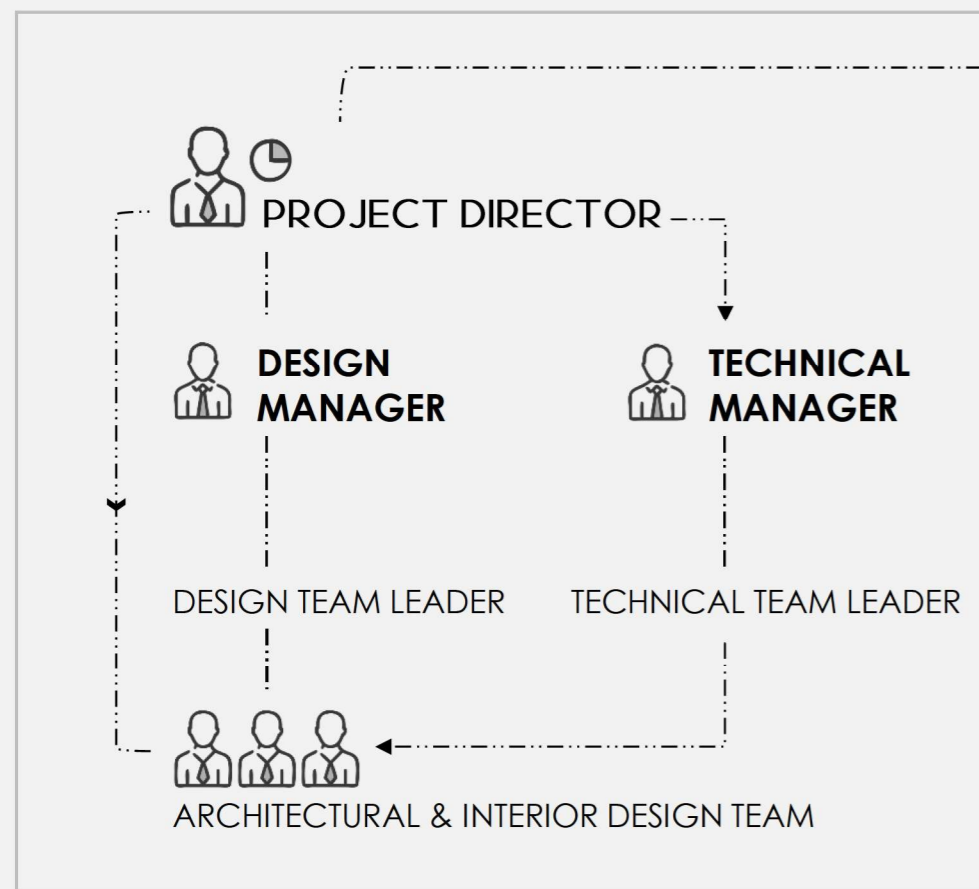
V

THE TEAM

COMPANY
ORGANIZATION CHART



PROJECT CHART



"...Bringing Dreams to Life..."

CONTACT US

MINKKE Architects

#02-01, 258 Middle Road

Singapore 188987

+65 6336 7882

Email: studio@minkkearchitects.com

Visit minkkearchitects.com for more information.

Photo: Our Material Samples Collection